

- *Achieving technical excellence every day and in challenging circumstances*
- *Peer-to-peer teaching and discussion*
- *Understanding and integration evolving AI technologies in routine practice*
- *How to adapt protocols to changing landscape in interventional structural and heart failure cardiology*
- *Highlighting the sonographer-physician team as the basis for success*
- *Up to 11.5 AMA PRA Category 1 Credits™*

iMAGINE 2023

Echocardiography Unplugged

November 11-12, 2023

*Shaheen Auditorium,
Marcus Heart & Vascular Tower,
Piedmont Hospital,
Atlanta, GA 30309*

Program Directors:

Kayla Bonds, RDCS

Kevin Moreau, RDCS

Mani A. Vannan, MBBS, FACC, FASE



GEORGIA
CHAPTER

AMERICAN COLLEGE of CARDIOLOGY®

General Information

Objectives

- Understand the strengths and limitations in the current use of AI in Echocardiography.
- Learn best practices in the evaluation of valvular heart disease.
- Formulate a guide to incorporate 3D and the use of UEAs in daily Echocardiography.
- Apply this knowledge to improve quality, efficiency and reliability of Echocardiographic data in your practice.

Who Should Attend?

- Sonographers, Sonographer-trainees, Physicians and Physician-trainees.
- Nurses and all others are touched by the magic of Echocardiography.
- All those who consider themselves students (and masters) of the science of Echo.
- All those who ask, "How Do I Accomplish Excellence in My World of Echo?"
- All those who are curious about what is in-between lines in the guidelines.

Speakers

- | | |
|------------------------------------|---|
| ▪ Kayla Bonds, RDCS | <i>No conflicts of interest</i> |
| ▪ Peter Flueckiger, MD | <i>TBD</i> |
| ▪ Theresa Green, RDCS | <i>Consultant: Abbott, Siemens, Bristol Myers Squibb</i> |
| ▪ Sara Mobasseri, MD | <i>TBD</i> |
| ▪ Kevin Moreau, RDCS | <i>Imaging Consultant: T3 Labs</i> |
| ▪ Mani A. Vannan, MBBS, FACC, FASE | <i>Research Grants, Equipment Support, and Speakers' Honoraria: Siemens Healthineers, Philips, GE, Abbott, Medtronic, Insol, Lantheus Medical Imaging</i> |

Saturday, November 11

7:15 - 8:00 am

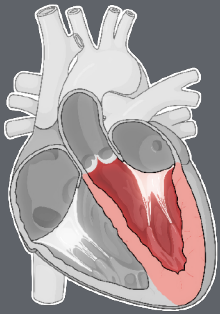
Breakfast, Registration and Visit Exhibits

8:00 - 8:15 am

Welcome, Introduction, Course Objectives

Mani A. Vannan, MBBS, FACC, FASE

8:15 - 10:00 am



Left Ventricular Size (Dimensions and Volumes), Ejection Fraction, Mass and Remodeling

Kayla Bonds, RDCS

Kevin Moreau, RDCS

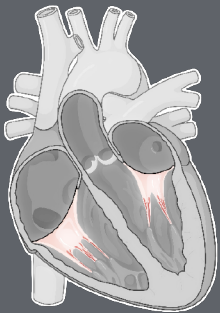
Mani A. Vannan, MBBS, FACC, FASE

- *2D: Manual Scanning and Measurements*
- *AI driven Optimal 2D Data Acquisition*
- *AI-based Non UEA 2D Measurements*
- *UEA Enhanced Vs. Non UEA Enhanced Measurements*
- *AI-Based UEA Measurements*
- *Questions/Discussion*

10:00 - 10:25 am

Coffee Break and Visit Exhibits

10:25 am - 12:30 pm



Mitral and Tricuspid Regurgitation

Theresa Green, RDCS

Kevin Moreau, RDCS

Mani A. Vannan, MBBS, FACC, FASE

- *AI driven Optimal CFD Data Acquisition*
- *Systematic TTE and TEE Examination of MR and TR*
- *Problem -Solving in Echo Quantification of MR and TR*
- *When to consider CMR?*
- *Case Study for Interpretation*
- *Questions/Discussion*

Saturday, November 11

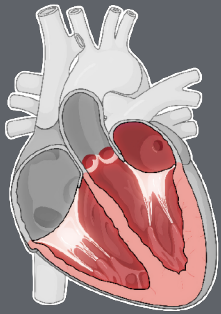
12:30 - 1:30 pm

Lunch Break

Mitral Clip Update for the Echocardiographer

Non-CME

1:30 - 3:15 pm



Case Studies for Interpretation

12 minute presentations followed by 4 minutes Q&A

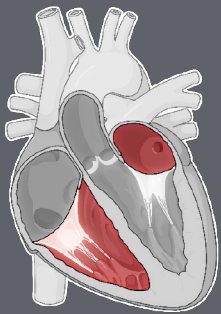
Moderated by Mani A. Vannan, MBBS, FACC, FASE

- *Bicuspid Aortic Valve | Peter Flueckiger, MD*
- *Heart Failure | Theresa Green, RDCS*
- *Mitral Valve | Sara Mobasseri, MD*
- *ECMO | Kevin Moreau, RDCS*
- *UEA | Kayla Bonds, RDCS*
- *3D TTE | Kevin Moreau, RDCS*
- *Questions/Discussion*

3:15 - 3:35 pm

Coffee Break and Visit Exhibits

3:35 - 5:00 pm



Left Atrium and The Right Heart

12 minute presentations followed by 4 minutes Q&A

Moderated by Mani A. Vannan, MBBS, FACC, FASE

- *LA Size and Strain | Mani A. Vannan, MBBS, FACC, FASE*
- *Doppler-Based Filling Pressures | Kayla Bonds, RDCS*
- *Right Heart Pressures | Theresa Green, RDCS*
- *RV Size (2D/3D TTE) | Kevin Moreau, RDCS*
- *RV function in Pressure and Volume Overload
Mani A. Vannan, MBBS, FACC, FASE*
- *Questions/Discussion*

5:00 pm

Adjourn

5:00 - 6:00 pm

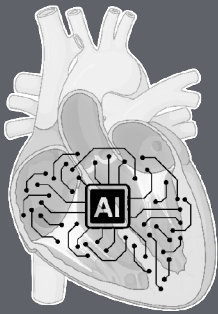
Reception for All Attendees

Sunday, November 12

7:30 - 8:15 am

Breakfast, Registration and Visit Exhibits

8:15 - 9:35 am



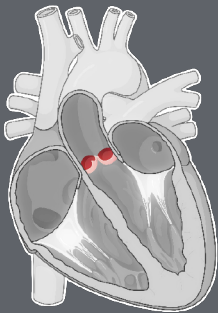
AI and other Innovations in Echocardiography

12 minute presentations followed by 4 minutes Q&A

Moderated by Mani A. Vannan, MBBS, FACC, FASE

- *Data Acquisition*
- *Workflow*
- *Quantitation*
- *Interpretation*
- *Handheld and Wireless Echocardiography*

9:35 - 11:15 am



Challenges and Case Studies in Aortic Valve Disease

12 minute presentations followed by 4 minutes Q&A

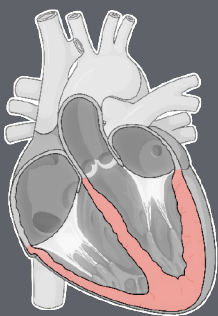
Moderated by Mani A. Vannan, MBBS, FACC, FASE

- *Non-Apical Doppler in AS | Theresa Green, RDCS*
- *AS Gradient in AF | Kayla Bonds, RDCS*
- *Low Gradient AS | Mani A. Vannan, MBBS, FACC, FASE*
- *Post TAVR TTE | Kevin Moreau, RDCS*
- *Post TAVR Elevated Gradient | Kevin Moreau, RDCS*
- *Aortic Regurgitation | Mani A. Vannan, MBBS, FACC, FASE*
- *Questions/Discussion*

11:15 - 11:30 pm

Coffee Break and Visit Exhibits

11:30 am - 1:00 pm



Myocardial Strain

Kayla Bonds, RDCS

Kevin Moreau, RDCS

Mani A. Vannan, MBBS, FACC, FASE

- *How We do it, and how to do it well?*
- *AI Driven Myocardial Strain Measurements*
- *Why Do We Need UEA-based Strain Measurements?*
- *Cardiotoxicity, LVH, HF, Valve Disease, RV Strain*
- *Questions/Discussion*

1:00 pm

Adjourn